



# Inter-federal workgroup testing and tracing

Process flows

May 30, 2020

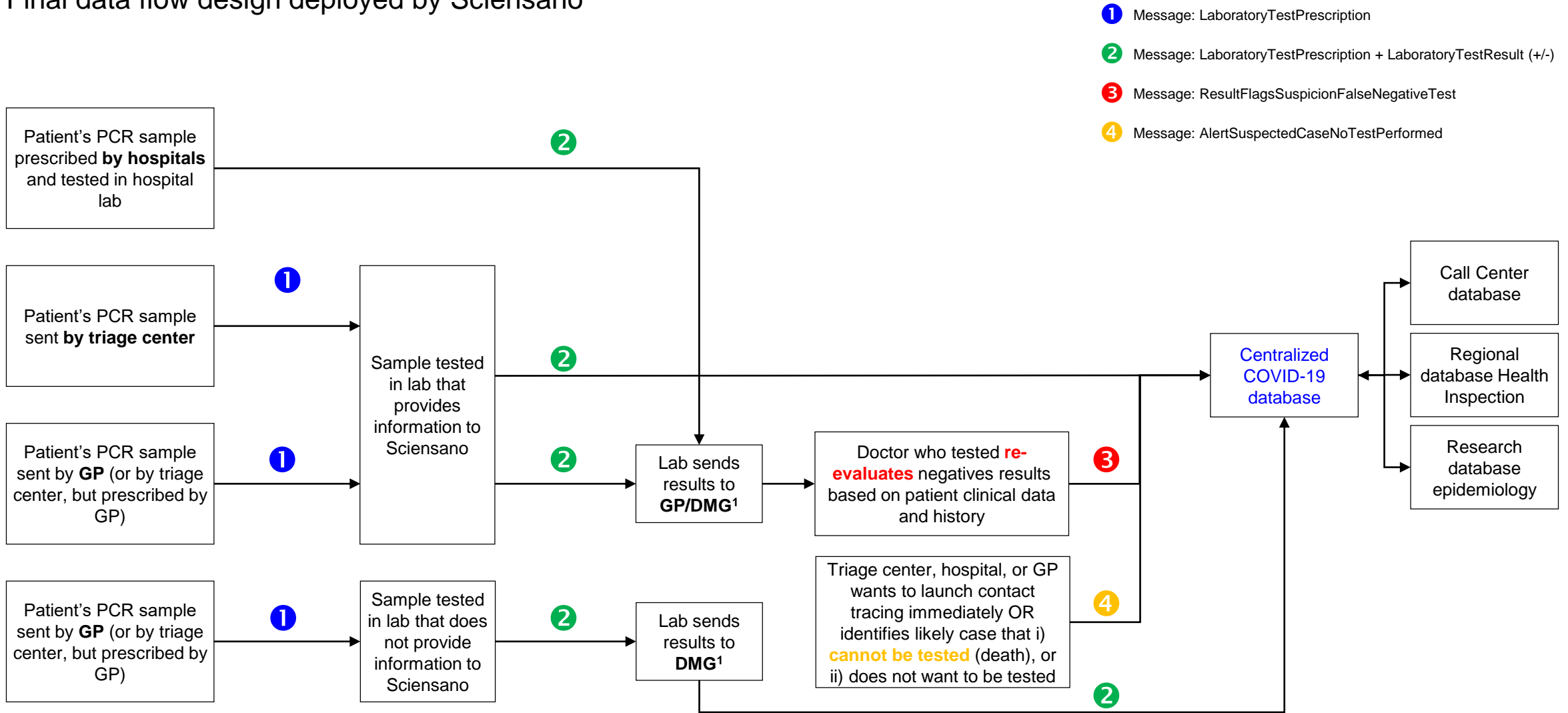
Author: Inter-federal Committee testing and tracing

# Key steps for contact investigation



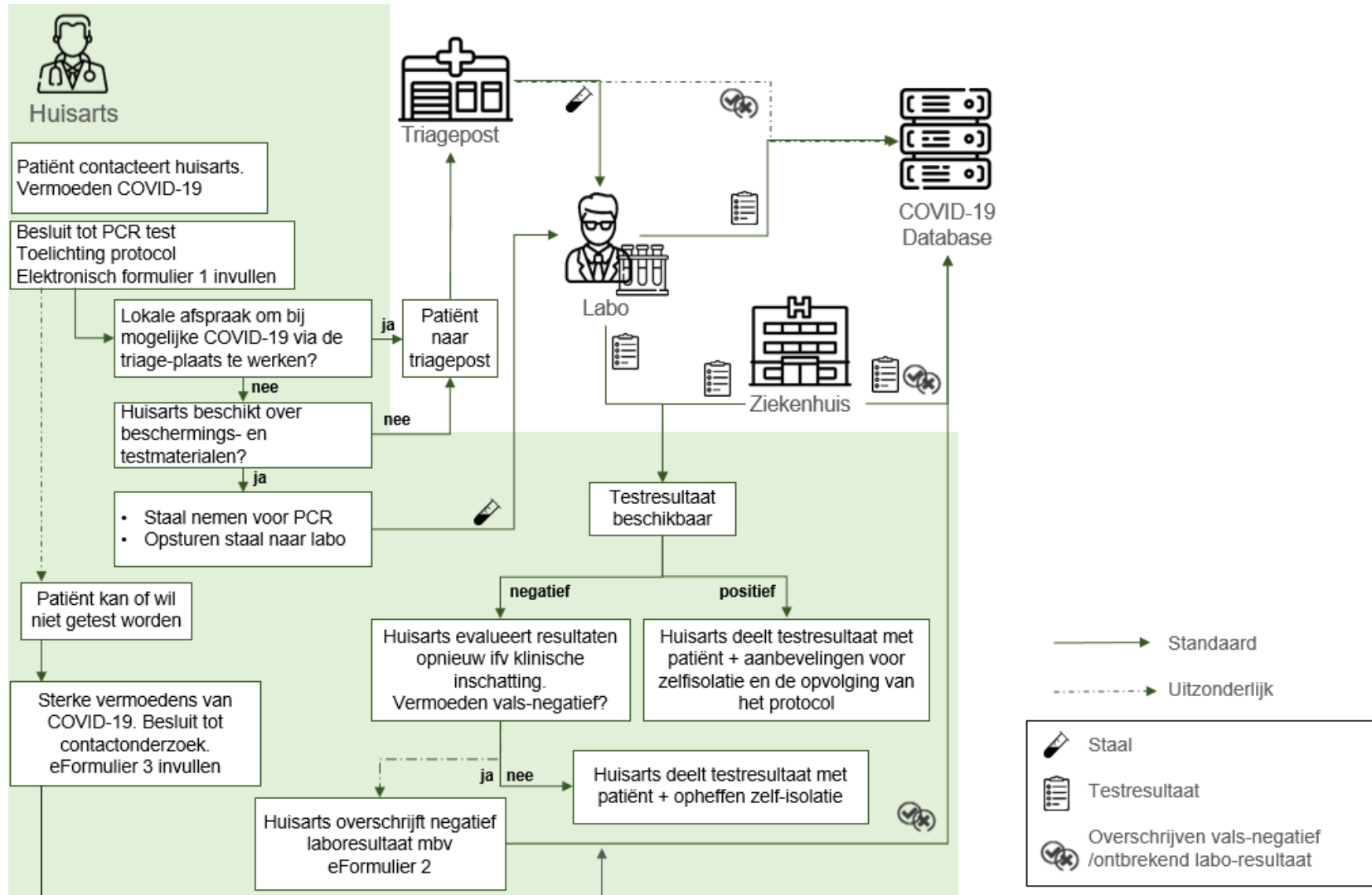
# 1: Report case

Final data flow design deployed by Sciensano

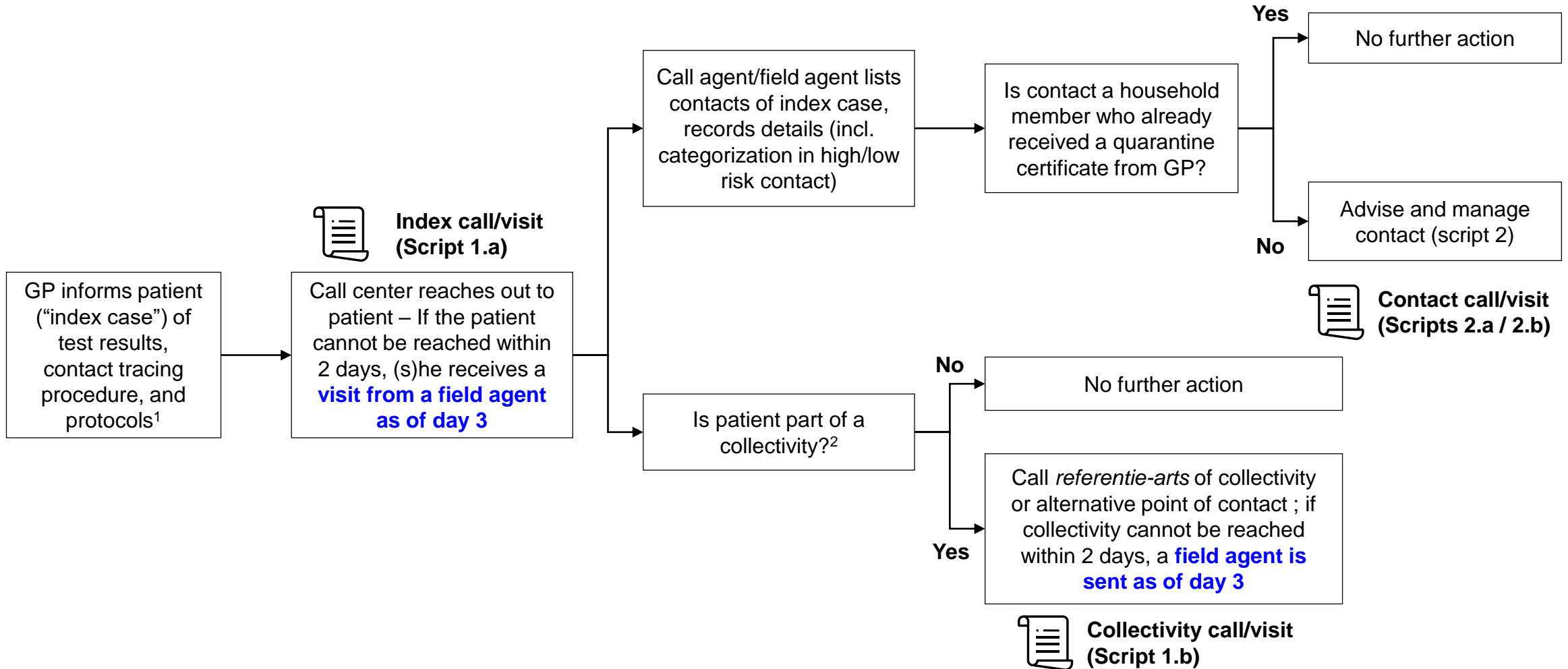


1. Dossier Medical Global

# 1: Report case – GP's perspective



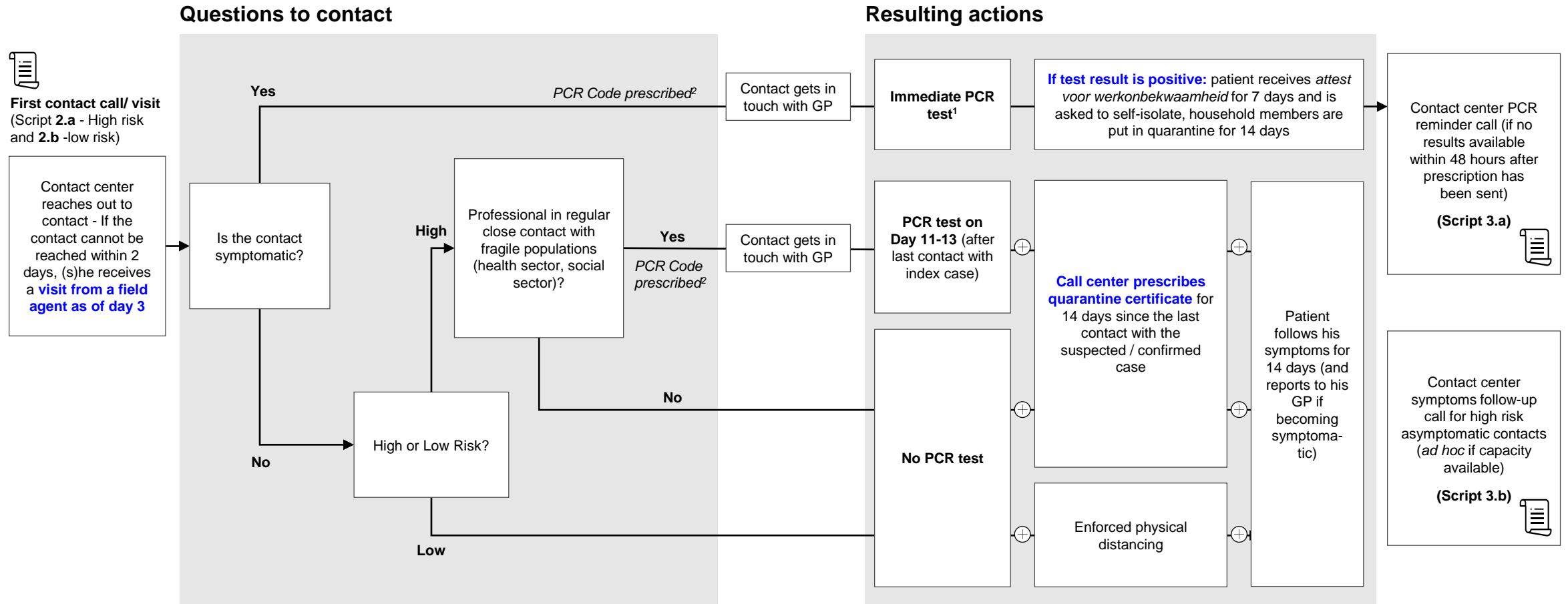
## 2: Identify and list contact(s)



1. Patient receives *attest voor werkonbekwaamheid* for 7 days and is asked to self-isolate (in case the patient is a healthcare worker, self-isolation should continue until 7 days after the start of the first symptoms and at least 3 days without fever and improvement of respiratory systems); patient's household members are put in quarantine for 14 days
2. For example, school, nursing home, child daycare, detention centre, etc.

# 3: Advise and manage contact(s) (1/2)

## First contact call



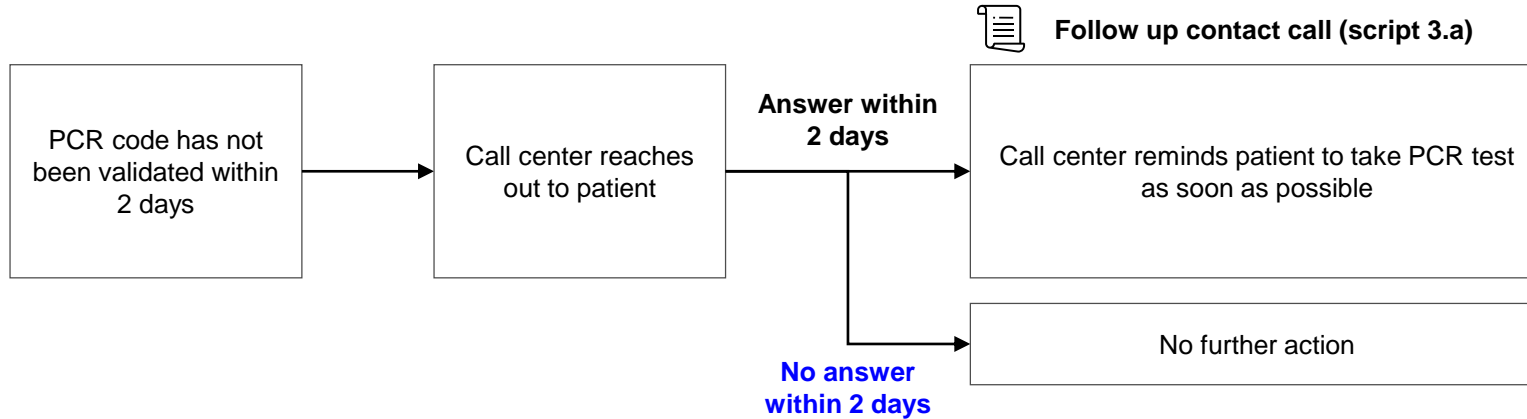
1. Patient is asked to self-isolate until test results are known; in case of a strong suspicion that the patient has COVID-19, household members are also asked to self-isolate until test results are known  
 2. Call agent sends a PCR code to contact via SMS or dictates the PCR code in case the contact does not have a mobile phone

Important: duration of quarantine certificate should be measured vs the day of last contact with the COVID-patient / suspected case

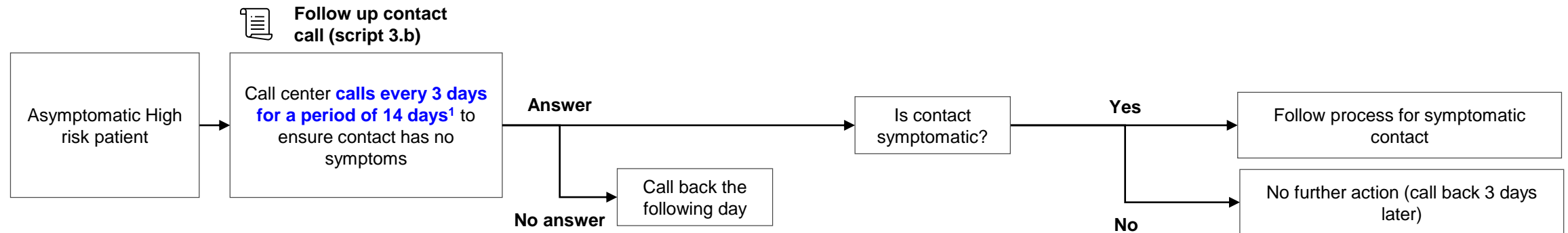
# 3: Advise and manage contact(s) (2/2)

## Contact follow up

### Script 3.a: PCR follow-up call (symptomatic contacts)

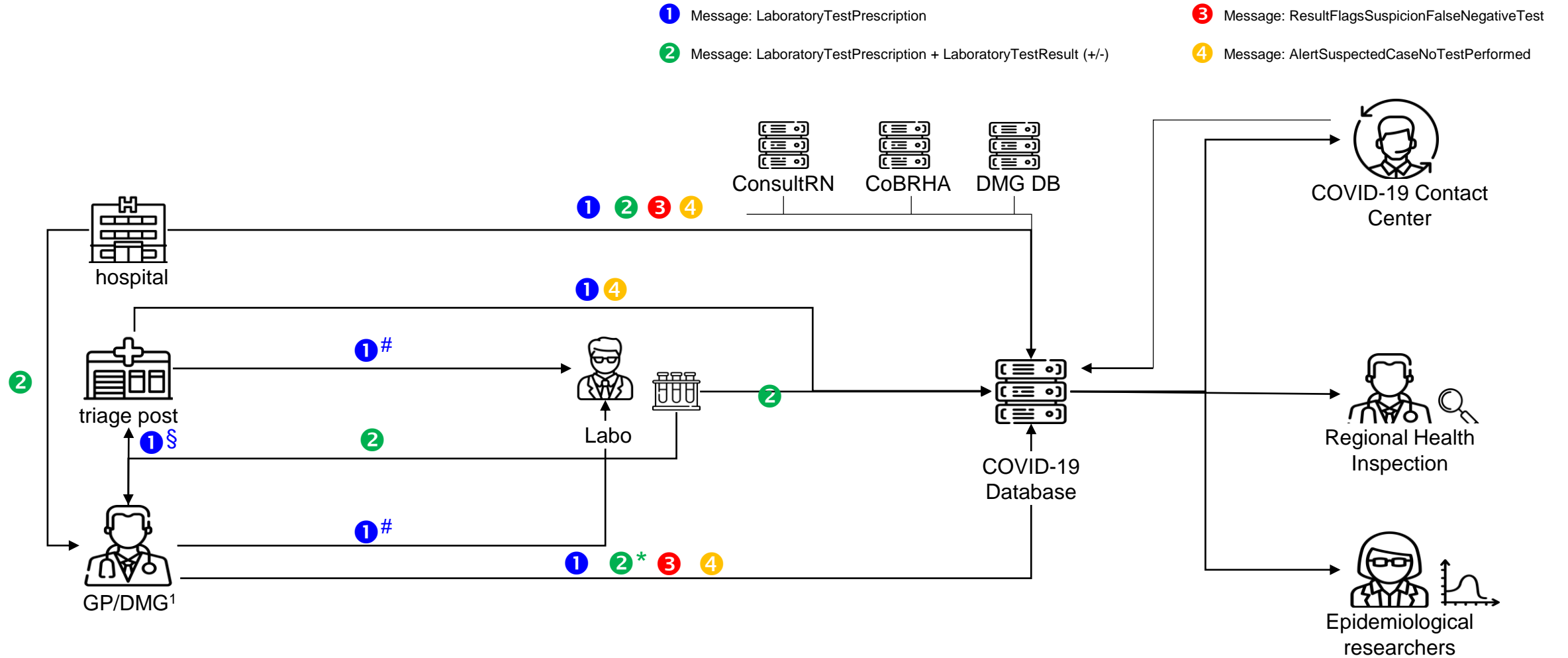


### Script 3.b: Symptoms follow-up call with High Risk Asymptomatic contacts



1. Measuring from the last day of contact with the Index patient

# Contact center – Data flow



\* Only if labo does not reports results to COVID-19 Database

§ Only if GP does not take sample him/herself

# With sample

1. Dossier Medical Global